

about us

Animal Imaging is an outpatient diagnostic imaging facility which provides state-of-the-art veterinary diagnostic imaging services to veterinarians and their companion animal and equine patients. Outpatient imaging centers have served a very important role in human medicine for many years, aiding in the diagnosis and treatment of human pathologies. We feel the time has come to provide the same high quality, patient-friendly imaging services for veterinary medicine.



Our goal is to enhance the role of imaging in the veterinary practice and to provide our referring veterinarians with exceptional service, image quality and timely reporting. We are proud to serve the veterinary community by providing MRI, Ultrasound, Nuclear Medicine, Fluoroscopy and radiography for small animal and equine patients.

services

MRI

Animal Imaging utilizes a state-of-the-art 1.0 Tesla high field MRI system to acquire high resolution images of the small animal and equine. MRI is a highly advanced, non-invasive modality that uses a super-conducting magnet and radio frequencies to obtain images. Although this modality is common in human medicine, to date it has been underutilized in the veterinary world.

MRI has several advantages over other imaging modalities:

- MRI produces a clear display of anatomy in any plane
- MRI allows for visualization of different tissue structures
- MRI has no radiation risk to the animals



Animal Imaging's high field system can acquire images at 1mm slice thickness, providing an in-depth view of the anatomy, even for small structures.

In the equine patient, MRI images can be obtained distal to the carpus and tarsus. It has been very effective at aiding in the diagnosis of specific pathologies contributing to lameness undetected by other imaging modalities or treatments.

In the small animal, MRI is used to image virtually every organ system including the brain, spinal cord, chest, abdomen, pelvis and extremities in order to diagnose various pathologies.



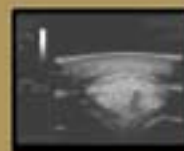
T1 sequence of a horse brain



Equine Tarsal Fracture

ULTRASOUND

Ultrasound procedures will be performed on equine and small animals using an advanced ultrasound system with Doppler capabilities. Cardiac, abdominal, and thoracic studies are performed in both the small animal and equine to diagnosis a number of potential pathologies. The Doppler flow technology aids in the evaluation of the percentage of blood flow to a particular region. Ultrasound is used to visualize specific problems in the equine extremity as well.



Equine dist flexor tendon tear